

The Dead Zone: Psychoanalysis in Myth, Archetype, and the Structure of Metaphor

"a hero ventures forth from the world of the common day into a region of supernatural wonder: fabulous forces are there encountered and a decisive victory is won: the hero comes back from this mysterious adventure with the power to bestow boons on his fellow man " (30).

-Joseph Campbell, The Hero with a Thousand Faces

By Miriam D. Dufer





Author/Text Relationship

- Author + idea (hypothesis, poem, story or theory)
- Idea = Text (paper, computer, or internet)
- Output +/- reader response



Questions

- Does the text function alone without connection to the author once it is released as output?
- Is the link between author and text infinitely connected and mutually inclusive?
- Does the text belong to the reader or author?
- What are the implications of psychoanalytic criticism?

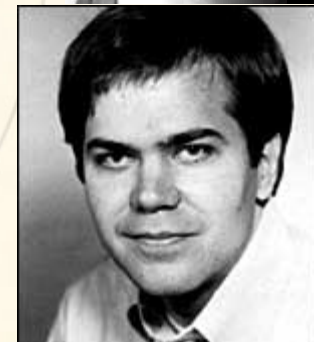
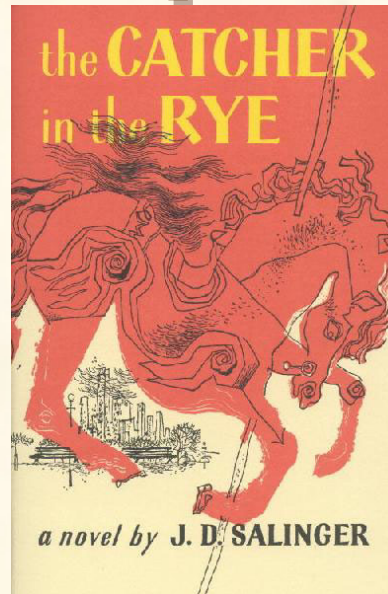


Background

- Barthes: Author-centric
- Alcorn and Bracher: traditional vs. recent views
- Freud: Father of Psychoanalysis
- Franzosa: Unimpeded flow of ideas from the unconscious
- Stone: Freud's influence in Literature
- Brooks: Anti-Psychoanalytic



Anthropological Importance



John Hinckley

Jared Leto as Mark David Chapman

Miriam D. Dufer

ENGL 810 – Spring 2008



Stephen King Interview

- Mind of the author (Barthes)
- Unconscious/Manifest Content (Freud)
- Elitism of Intelligentsia (Freud)



Interconnected

- Jung
- Campbell
- Metaphor, Myth and Archetype are interconnected
 - Metaphor → Myth → Archetype



Archetype, Myth, and Metaphor

- Archetype: a typical or recurring image, character, narrative design, theme, or other literary phenomenon that has been in literature from the beginning and regularly reappears
- Myth: an "old wives' tale," a generally accepted belief unsubstantiated by fact
- Metaphor: a figure of speech in which a word or phrase is applied to something to which it is not literally applicable



Cassandra of Troy



Cassandra by Evelyn De Morgan

- Can “see”
- Issues warnings
- Not believed
- Skepticism



Campbell's Monomyth

- Separation
- Initiation
- Return





Johnny Smith



- 6 years in coma
- Awakens
- Can “see”
- Issues Warnings
- Not Believed
- Skepticism



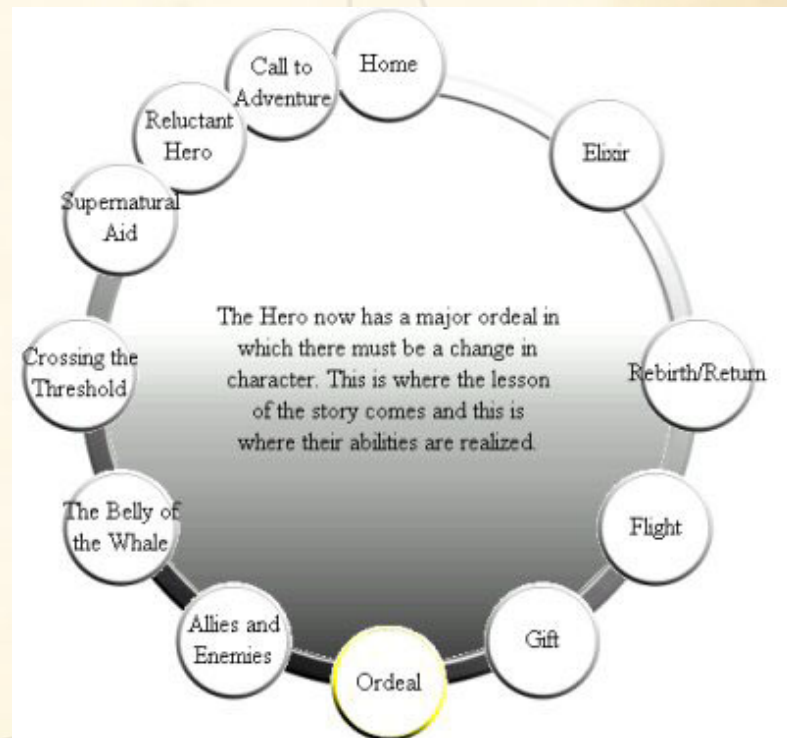
The Journey Cycle

Stages 1-6

Birth
Call to Adventure
Helper/Amulet
Crossing the Threshold
Tests
Helpers

Stages 7-11

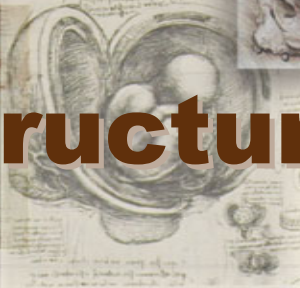
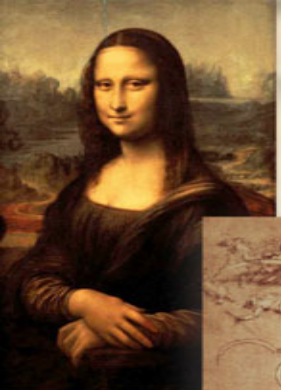
Not seen in pilot episode but foreshadowed





Dead Zone Definitions

- Cell Phone
- Water System
- Computer
- The Human Brain



Structure of Metaphor

- Tenor
- Vehicle
- Dimension

Tenor	Vehicle	Dimensions/Emotions
mind	tricks	playful, deceptive, disconnected, separated, unreliable
Brain	Dead Zone	Un-accessed portion of the brain, sixth sense,
athletic game	sport	unique connection to a person, reserve the pet name for those closest to us
light color	pale	fearful, anxious
male sibling	brother	black man, Shared culture makes for kin,
keep for a short time	borrow	loan, short term interaction, non-human object
Nursery Rhyme Character	Humpty Dumpty	brain is scrambled like eggs
change	morph	change, metamorphosis
literary character	Rip Van Winkle	someone asleep for a long time, awakening from a long sleep
die	slip away	peaceful death, painless
snow	new powder	Hardship is a precipitate (from above).
car	horse	try again, persevere
confront	forced the issue	aggression



Conclusion

- Psychoanalysis in Literature
 - Author-text-reader foci
 - Anthropological importance
 - Myth, Metaphor, Archetype



Questions

