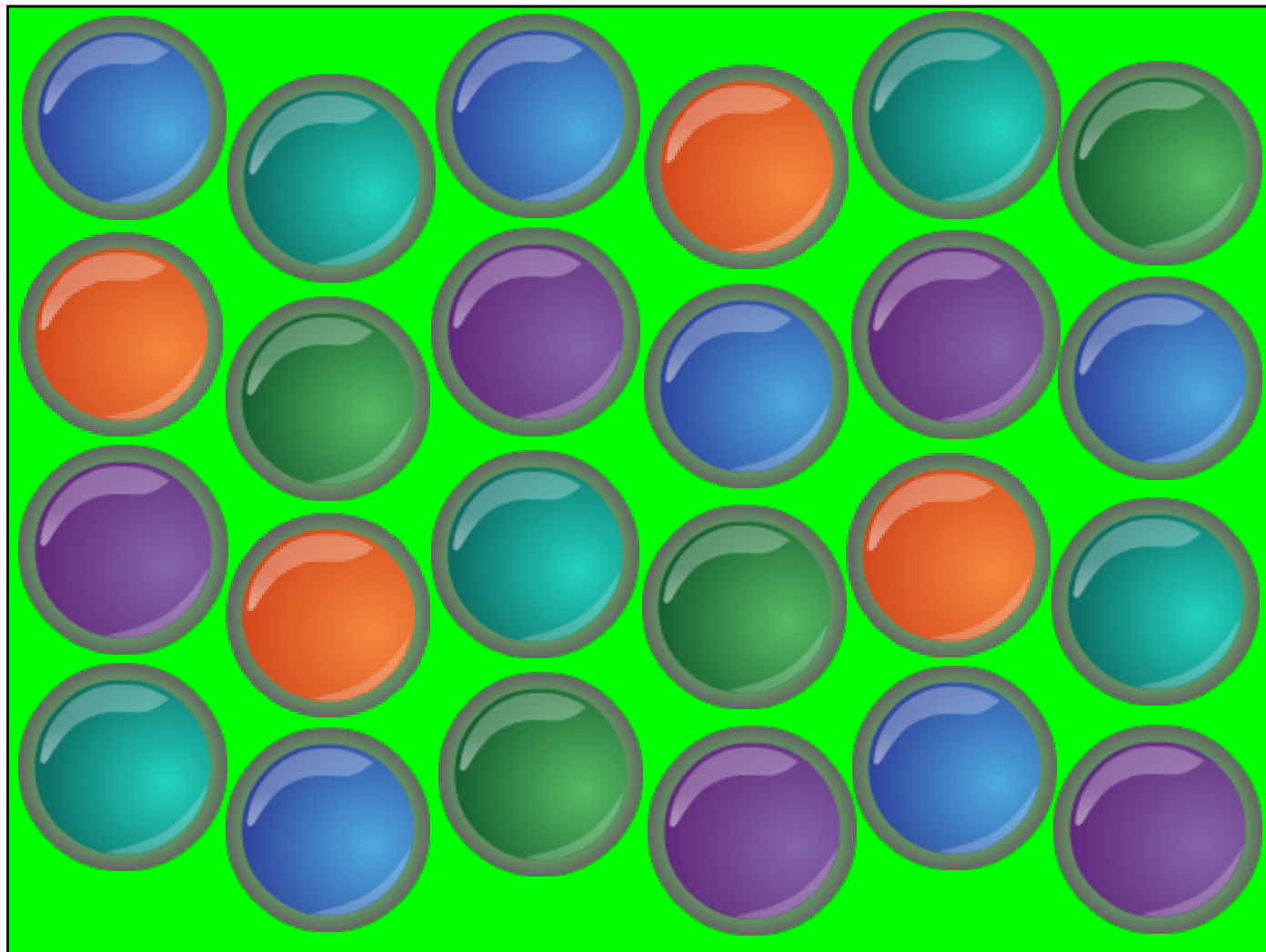


Let's watch: Franklin's  
Spelling Test

# The Letter G song



Spell a word that ends in 'OR'





Who, \_ \_ \_ \_ , Where,  
When and Why?  
Question Words!



Spell a word that has a  
hard G sound.



I am very shiny!

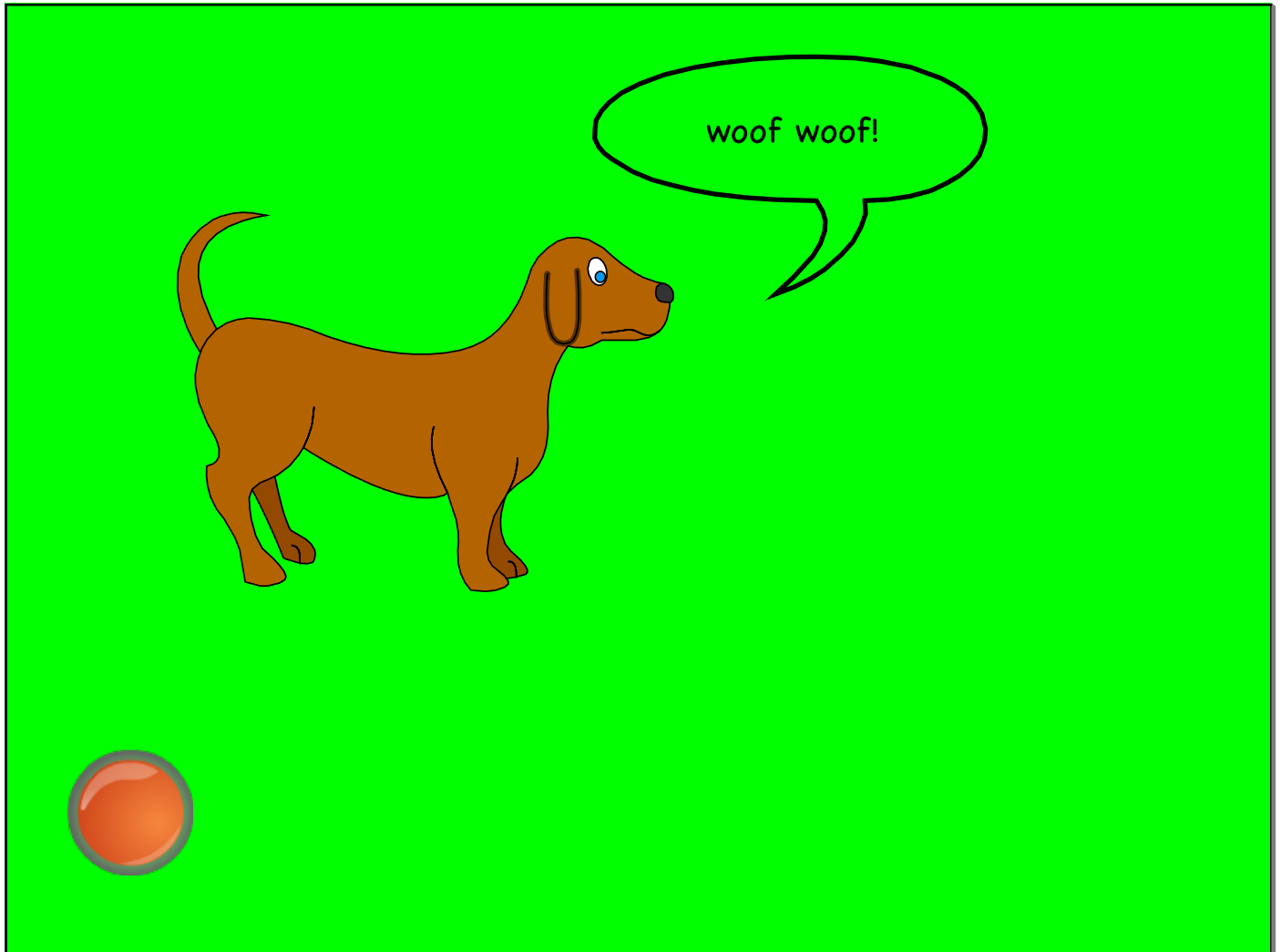




This word means "fantastic"!

\_\_\_eat



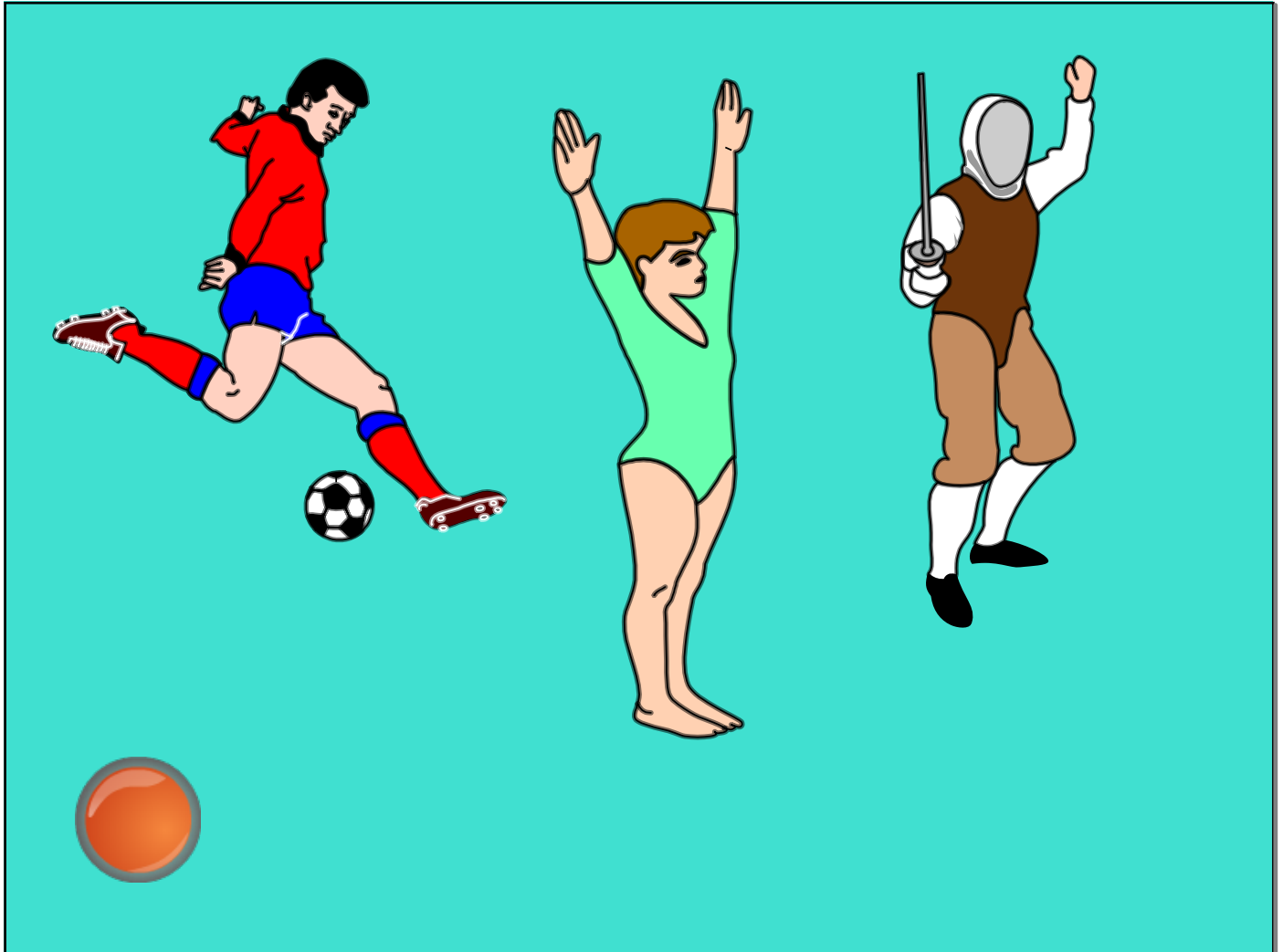


I h\_ \_ a friend who c\_ \_ \_  
f\_ \_ \_ Alaska.



Spell a word that begins with 'OR'





Spell a word that ends in 'OR'



Spell a word that has a soft G  
sound.



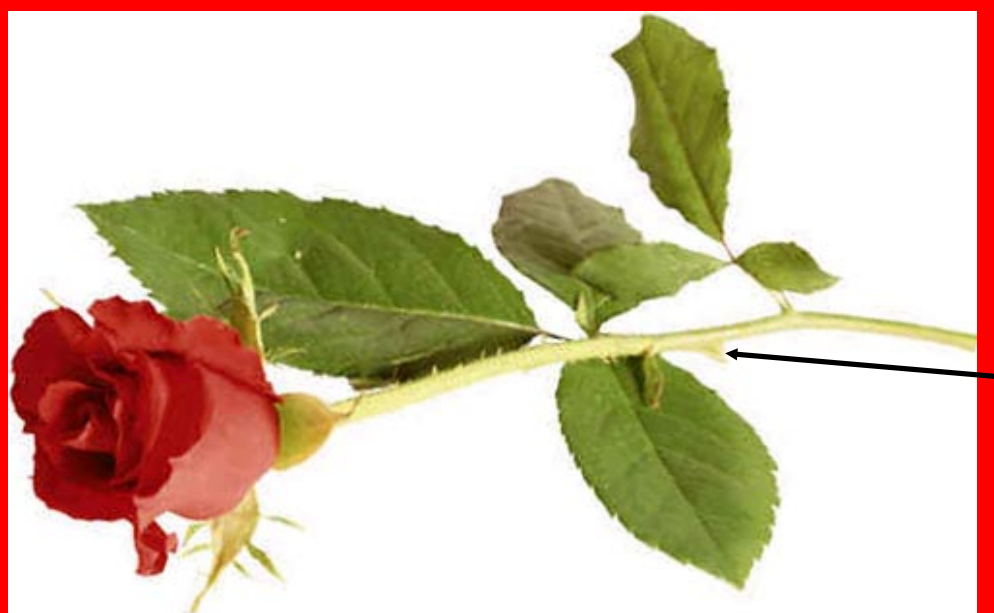
I'm beat, I'm tired, I'm really \_  
\_ \_ \_ out!





Spell: The direction that is  
opposite of south.





This word means "happy"!

g \_ \_ \_

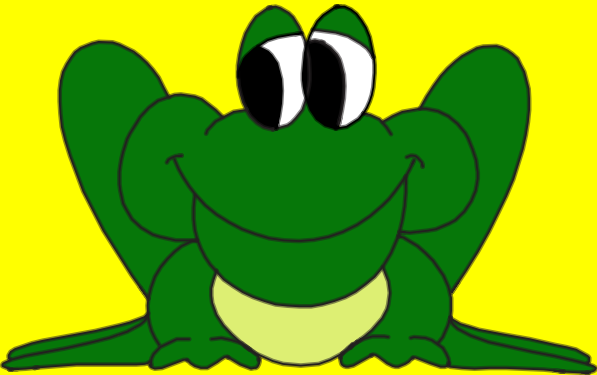


Spell a word that has a soft G  
sound.



"Oh No!" Santa cried. "It's  
Christmas Eve and my sack is  
\_ \_ \_ \_!"





Spell a word that has a  
hard G sound.



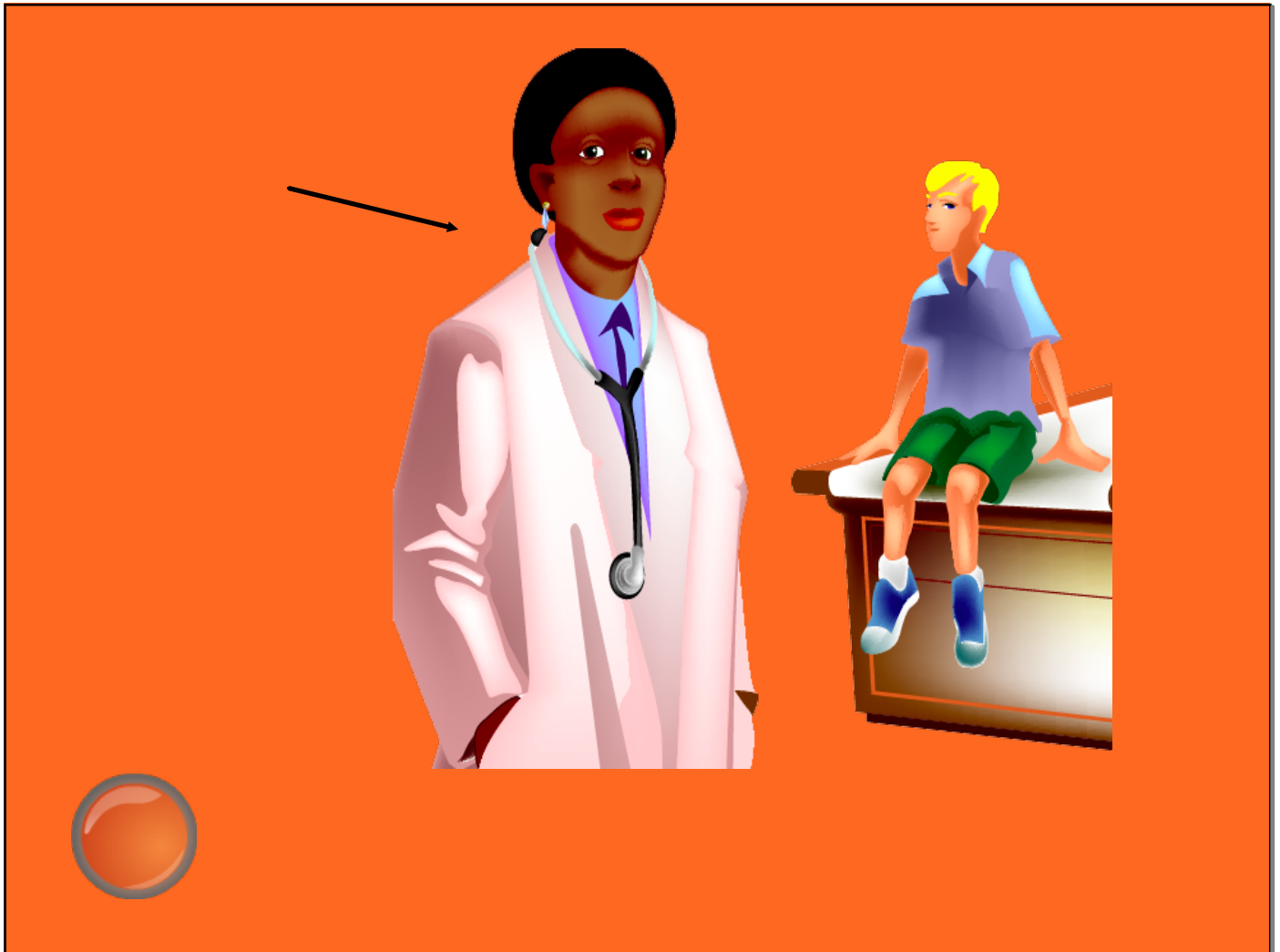
Spell the word that means  
the opposite of small.





We are all \_ \_ \_ \_ \_ in  
Mrs. Frisina's class!





Spell a word that begins with 'OR'



Edit

Reset

?

Soft G

Hard G

