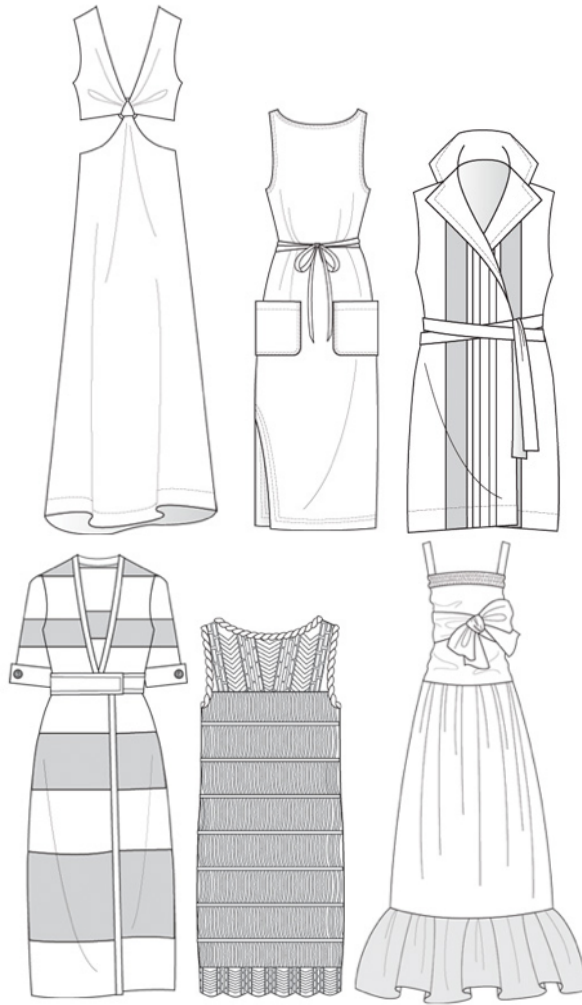


Trend Report
Banana Republic
S/S 2012 Women's Dresses

Vianca Lois Carpio

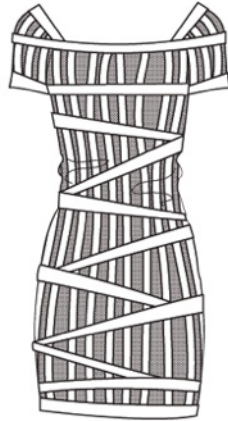
Professor Lee
Applied Buying
Online Course
6 November 2011

Silhouettes



Spring/Summer 2012 dress silhouettes will consist mainly of resort wear. Expect dresses that can be taken from the beach to the restaurant as well as from day to night. They can be easily slipped on and off and worn over a bikini bathing suit.

Silhouettes



For a night on the town, body con dresses will be making appearances like previous seasons. However this season they will be more sophisticated, polished, and showing less skin, as they will be most likely coming with short or $\frac{3}{4}$ sleeves.

Colors

Meknes



Saharan Sunset

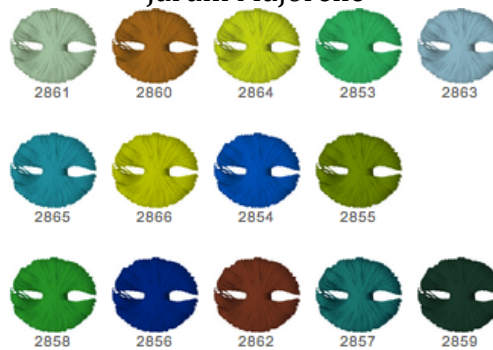


Colors

Meknes



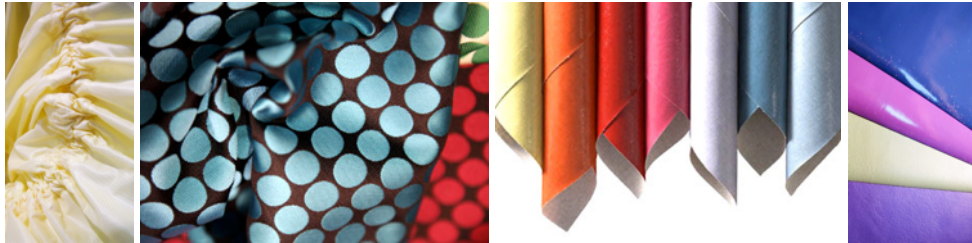
Jardin Majorelle



Textiles



Printed crepe silk and Chinese silk



Lightweight nylon, satin polyester, polyurethane coated linen & coated jersey



All-over sequins



Linen gauze & West African prints



Cameroon wax print, embroidery, eyelet embroidery, durable cotton