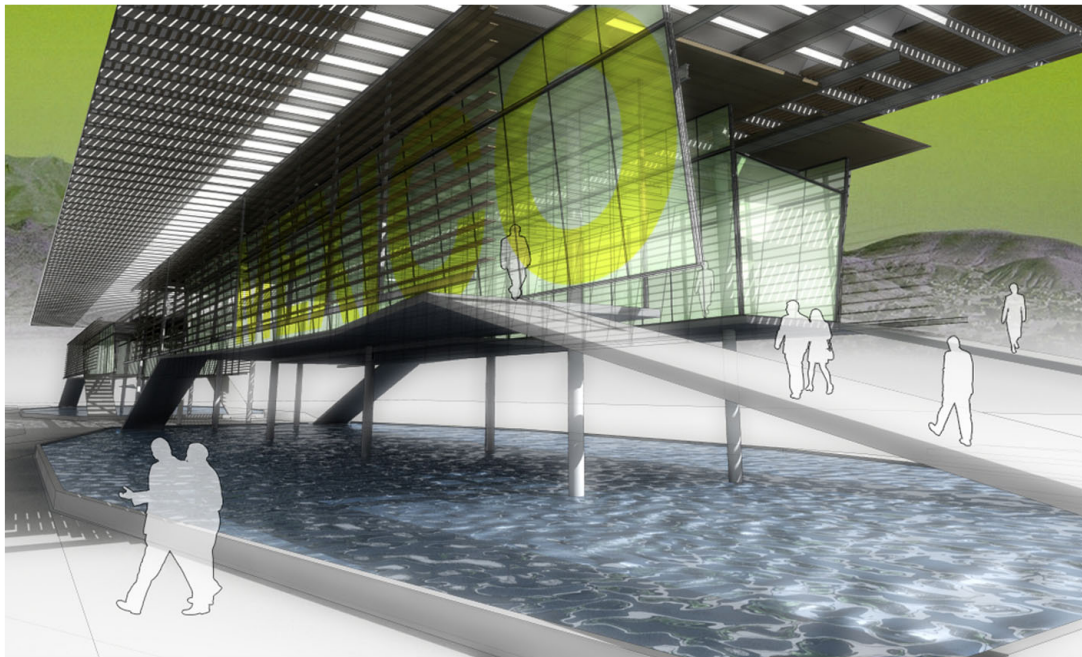
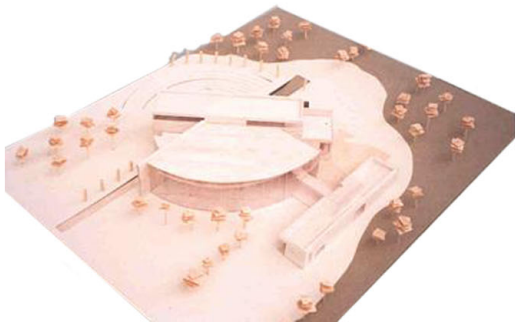
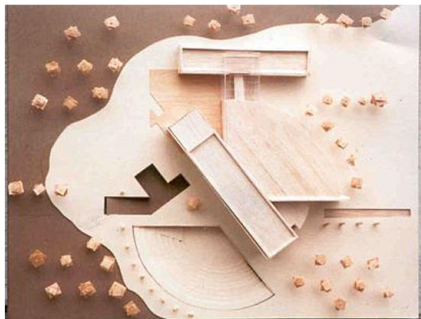


VICTOR CHAVEZ
STUDIO**WORKS**



**VICTOR
CHAVEZ**

STUDIOWORKS
ARQUINE COMPETITION 2005



**VICTOR
CHAVEZ**

STUDIOWORKS
Theater Design, 2001, Univesite Laval du Quebec









**VICTOR
CHAVEZ**



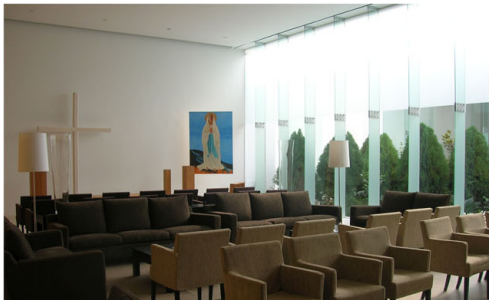
STUDIOWORKS

Calzada 401 @ LANDA GARCIA LANDA



**VICTOR
CHAVEZ**

STUDIOWORKS
Capillas Marianas @ LANDA GARCIA LANDA





**VICTOR
CHAVEZ**

STUDIOWORKS
ADC @ LINTEL



**VICTOR
CHAVEZ**

STUDIOWORKS
Lexmark Phase I @ LINTEL



**VICTOR
CHAVEZ**

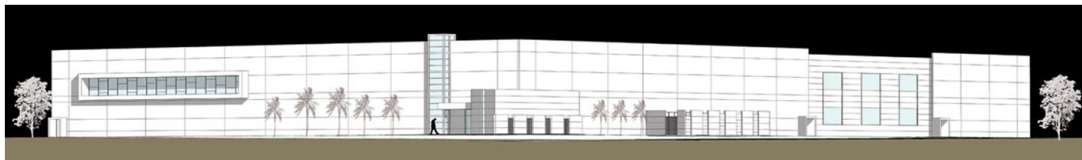


STUDIOWORKS
Lexmark Phase I @ LINTEL



**VICTOR
CHAVEZ**

STUDIOWORKS
Lexmark Phase II @ LINTEL





LEXMARK LCCP BUILDING CD. JUAREZ, CHIHUAHUA, MEXICO

44.4% annual water savings

25.1% energy savings

12.5% reused/salvaged material

LEED® Facts

Lexmark LCCP Building
Cd. Juarez, Chihuahua, Mexico

LEED for New Construction
Certification awarded January 5, 2010

Gold 40*

Sustainable Sites 10/14

Water Efficiency 3/5

Energy & Atmosphere 7/17

Materials & Resources 7/13

Indoor Environmental Quality 10/15

Innovation & Design 3/5

*Out of a possible 69 points

The information provided is based on data stated in the LEED project certification submit, USGBC and Chapters do not warrant or represent the accuracy of this information. Each building's actual performance is based on various design, construction, operation, and maintenance. Energy efficiency and sustainable results will vary.

LEXMARK LCCP BUILDING

Protecting the environment is part of our nature.

Lexmark's commitment to environmental sustainability extends to its buildings.

PROJECT BACKGROUND

Lexmark manufactures printer toner cartridges for distribution throughout the world. As a leader in sustainable manufacturing, Lexmark encourages consumers to return spent cartridges for recycling. Each day, trucks carrying up to 30,000 used toner cartridges from locations throughout the world arrive at Lexmark's receiving dock in Cd. Juarez, Mexico. As part of Lexmark's Cartridge Collection Program (LCCP), the cartridges are sorted and classified. Those qualified for reuse are remanufactured for sale as recycled cartridges. Those that are not considered reusable are disassembled and shredded. One hundred percent of the components are recovered. It is interesting to note that one use of the shredded plastic is as a plasticizer for precast concrete panels.

Approximately 165 people work in the 99,000 square foot LCCP Building. The LCCP building includes manufacturing areas, warehouse areas, administrative offices, locker rooms, a nursery, a kitchen and an employee cafeteria. It was designed for future expansion when demand for cartridge recycling increases. The LCCP Building is located on Lexmark's corporate campus in southeast Cd. Juarez. The surrounding area includes residential neighborhoods to the north and future mixed-use sites to the east and south.

STRATEGIES AND RESULTS

This was truly an international collaboration as the project team consisted of companies from both Mexico and the United States. Many of the participants had never worked on sustainable projects, so educating team members and securing their commitment to sustainable practices was the starting point in the project plan. The LCCP building was initially targeted for LEED Silver, but the project team exceeded expectations and the building was certified LEED Gold.

The Lexmark Recycling Facility is the first manufacturing plant in Mexico to obtain LEED certification. It is also the first LEED Gold project in the El Paso-Juarez metropolitan area.

REGIONAL CREDITS

Although the project was registered under LEED Version 2.2, it serves as an example of how regional credits (Water Efficiency credit 3.2 for water use reduction and Materials & Resources credit 5.2 for regional materials) could be earned in Urban Zone 1 in adjacent El Paso, Texas.

ABOUT LEXMARK

Lexmark is an international company with corporate headquarters in Lexington, Kentucky and manufacturing plants in many countries. It employs about 3,500 people in Cd. Juarez where it manufactures developer rolls, laser cartridges and toner.

Lexmark strives to be an environmentally responsible provider of products and services. Since 1996, Lexmark has recovered and reused or recycled millions of spent toner cartridges. The result is less solid waste and fewer resources consumed. The magnitude of this operation becomes apparent when one considers that Lexmark's Cartridge Collection Program accounts for 20% of United Parcel Service's business in the region.



Owner: Lexmark International Mexicana
LEED Consultant: Bath Commissioning Corporation
Project Manager: ECM International
Architect: Constructora Lintel
Contractor: Constructora Lintel
Interior Designer: Constructora Lintel
Landscape Architect: Constructora Lintel
Mechanical Engineer: Futec Ingenieria de Climas
Electrical Engineer: Baruelta Ingenieria Elctrica
Plumbing Engineer: Contreras International
Structural Engineer: Elmas Edificacion Metalica Ind.
Civil Engineer: Constructora Lintel
Lighting Designer: Baruelta Ingenieria Elctrica
Commissioning: Bath Commissioning Corporation

Project Size: 99,529 sq. feet
Total Project Cost: \$6.8 million
Cost Per Square Foot: \$68.32 / sq. feet

Photographs Courtesy of
Bath Commissioning Corporation

ABOUT LEED

The LEED® Green Building Rating System™ is the national benchmark for the design, construction and operations of high-performance green buildings. Visit the U.S. Green Building Council's Web site at www.usgbc.org to learn more about LEED and green building.



www.usgbc.org
1-800-795-1747



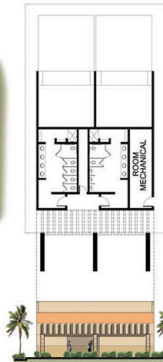
**VICTOR
CHAVEZ**

STUDIOWORKS
Lexmark Phase IV @ LINTEL

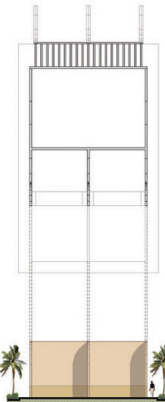
RESTROOMS AND HANDBALL COURT



ELEVACION DERECHA
RIGHT ELEVATION



ELEVACION FRONTAL
FRONT ELEVATION



ELEVACION POSTERIOR
REAR ELEVATION



ELEVACION IZQUIERDA
LEFT ELEVATION



**VICTOR
CHAVEZ**

STUDIOWORKS
Real de Misiones @ LINTEL

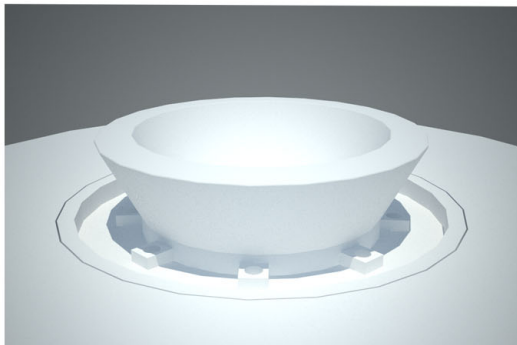


**VICTOR
CHAVEZ**

STUDIOWORKS
Real de Misiones @ LINTEL



**VICTOR
CHAVEZ**



STUDIOWORKS
Real de Misiones @ LINTEL







**VICTOR
CHAVEZ**

STUDIOWORKS
Motorola @ LINTEL



**VICTOR
CHAVEZ**

STUDIOWORKS
Motorola @ LINTEL

VICTOR CHAVEZ
STUDIOWORKS