

A Guide for Your USB Flash Drive

Job Aid Project

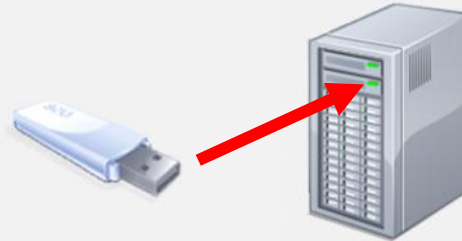
EDT 503-Summer 2009

Jennifer Geisler

A Guide for Your USB Flash Drive

To **open** a file from the flash drive

Insert flash drive into
USB port.



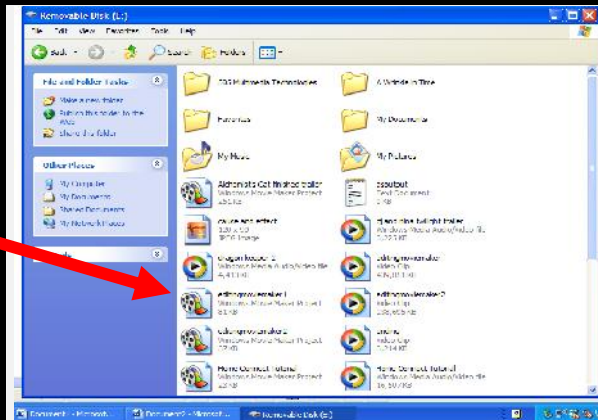
Wait for automatic
hardware installation
box.

Found New Hardware
Your new hardware is installed and ready to use.

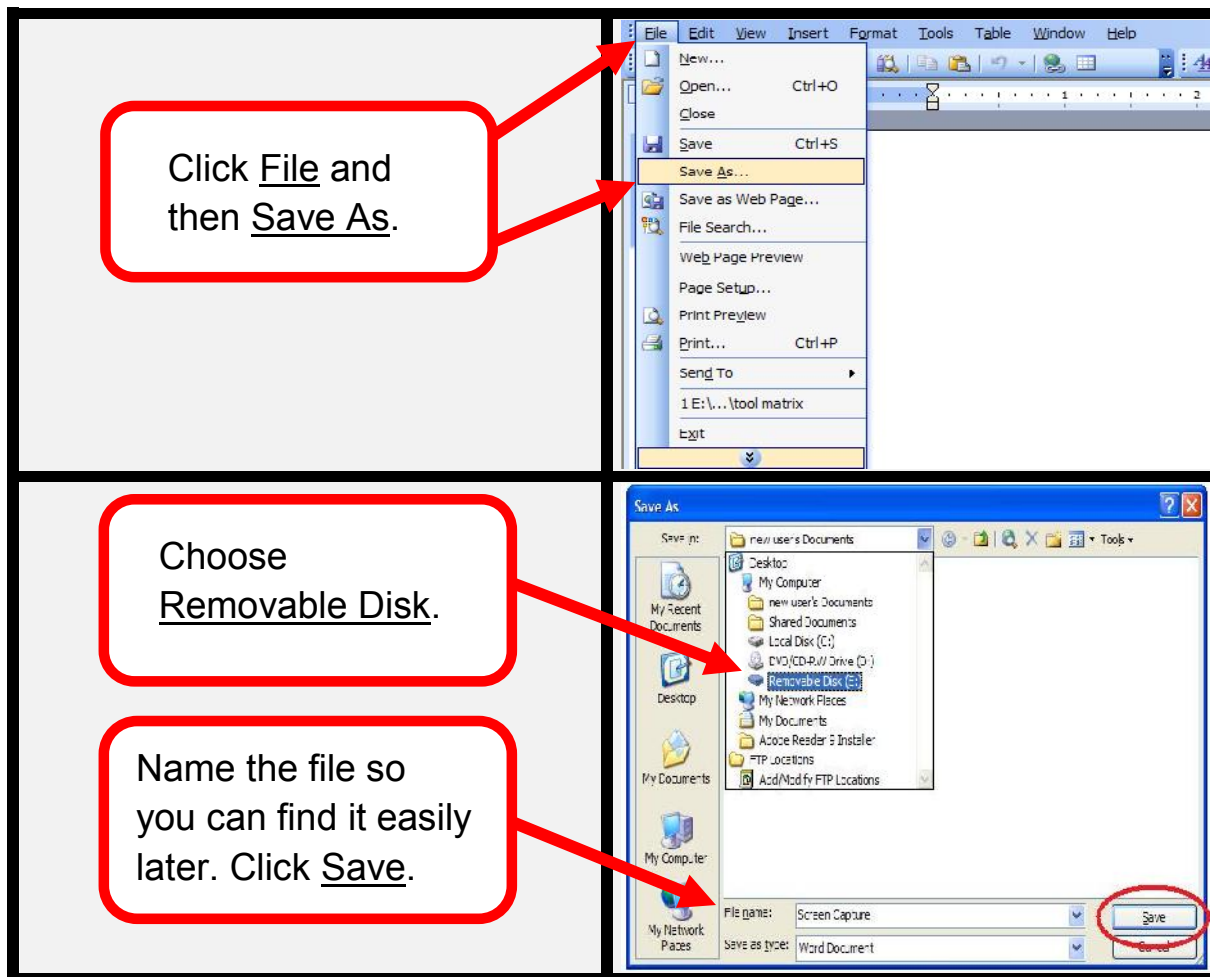
Select Open
folder to view files
and then click OK.



Choose the file you
want to open and
double-click.



To **save** a file from the computer to the flash drive



To **remove** the USB flash drive **safely**

