



Harden House

Ashleigh Richards

Interior Design Studio I

INDS 110-02

Professor Brooks

Spring Quarter 2012

Table of Contents

Client Information.....	3
Concepts.....	4
Site Analysis.....	5
Building Orientation.....	6
Circulation.....	7
Furniture Plan 1st Floor.....	8
Furniture Plan 2nd Floor.....	9
Perspectives.....	10-15
Entryway	
Living Room	
Dining Room	

Kitchen & Eating Space	
Bedroom	
Bathroom	
Elevations.....	16-17
Powder Room	
Kitchen & Eating Space	
Final Appendix.....	18-26
Finishes	
Sources	

Client Intro



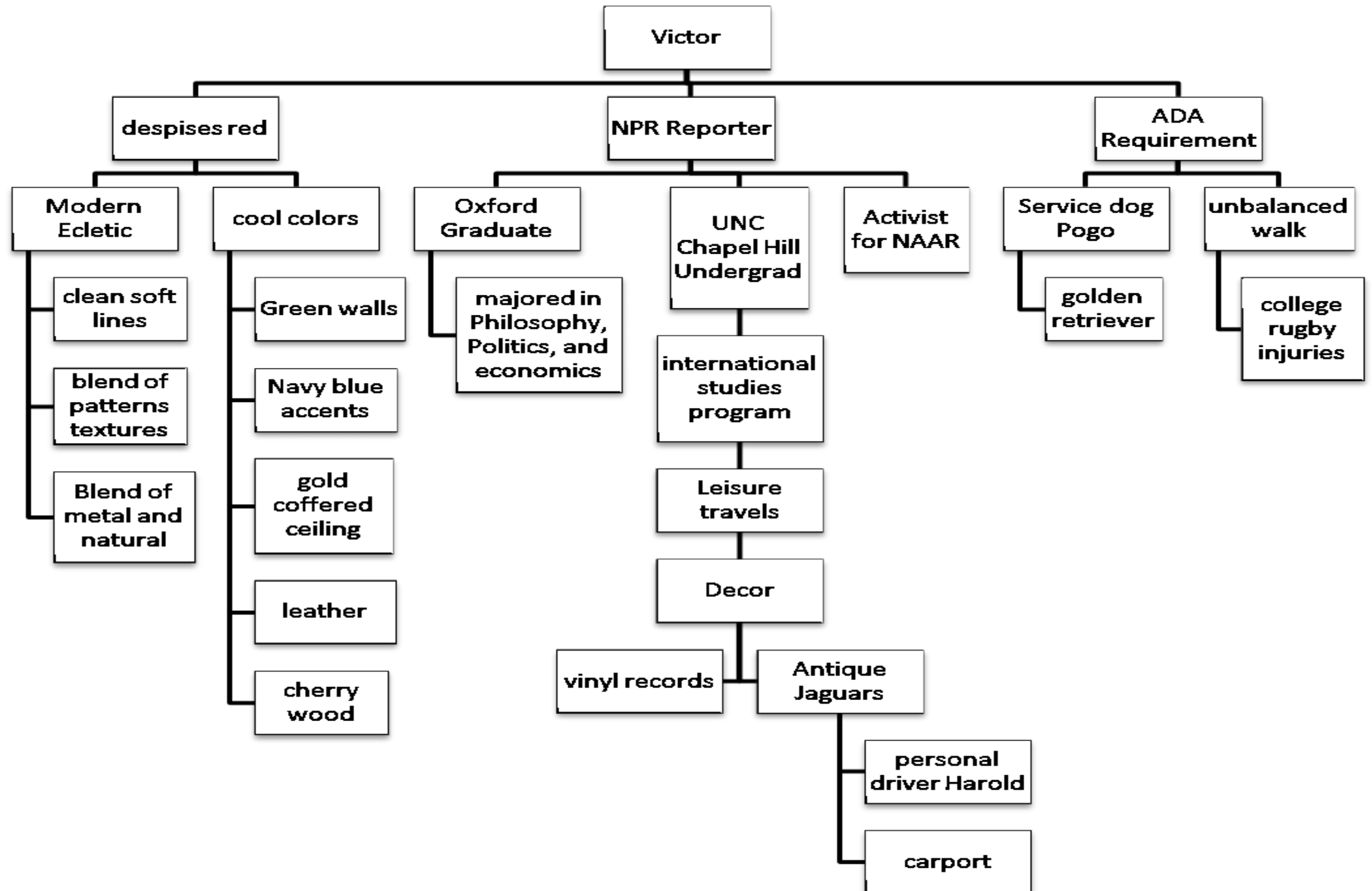
Victor Stratton was born on August 20, 1969 in Savannah, GA. He is 6 feet tall with blonde hair and blue eyes. He despises the color red and a little orange. Several of his favorite pastimes consist of collecting vinyl records, radios, and antique cars. In addition to his prized collections, Victor also enjoys attending Milwaukee Brewers baseball games.

While at UNC Chapel Hill, Victor spent many years pursuing the field of International Studies as an undergraduate student. He then went on to Oxford where he graduated with a major in Philosophy, Politics, and Economics. During his stay at Oxford, Victor received multiple concussions from rugby injuries which later left him to be unbalanced in his walk.

Now as a 43 years old bachelor, Victor has achieved his dream profession as a reporter for the National Public Radio in Great Britain where he currently fights for the cause of National Assembly Against Racism.

Since his career allows him to be flexible, Victor, his golden retriever Pogo, and personal driver Harold travel frequently to exotic warm destinations like Bali and other East Asian countries.

Concepts



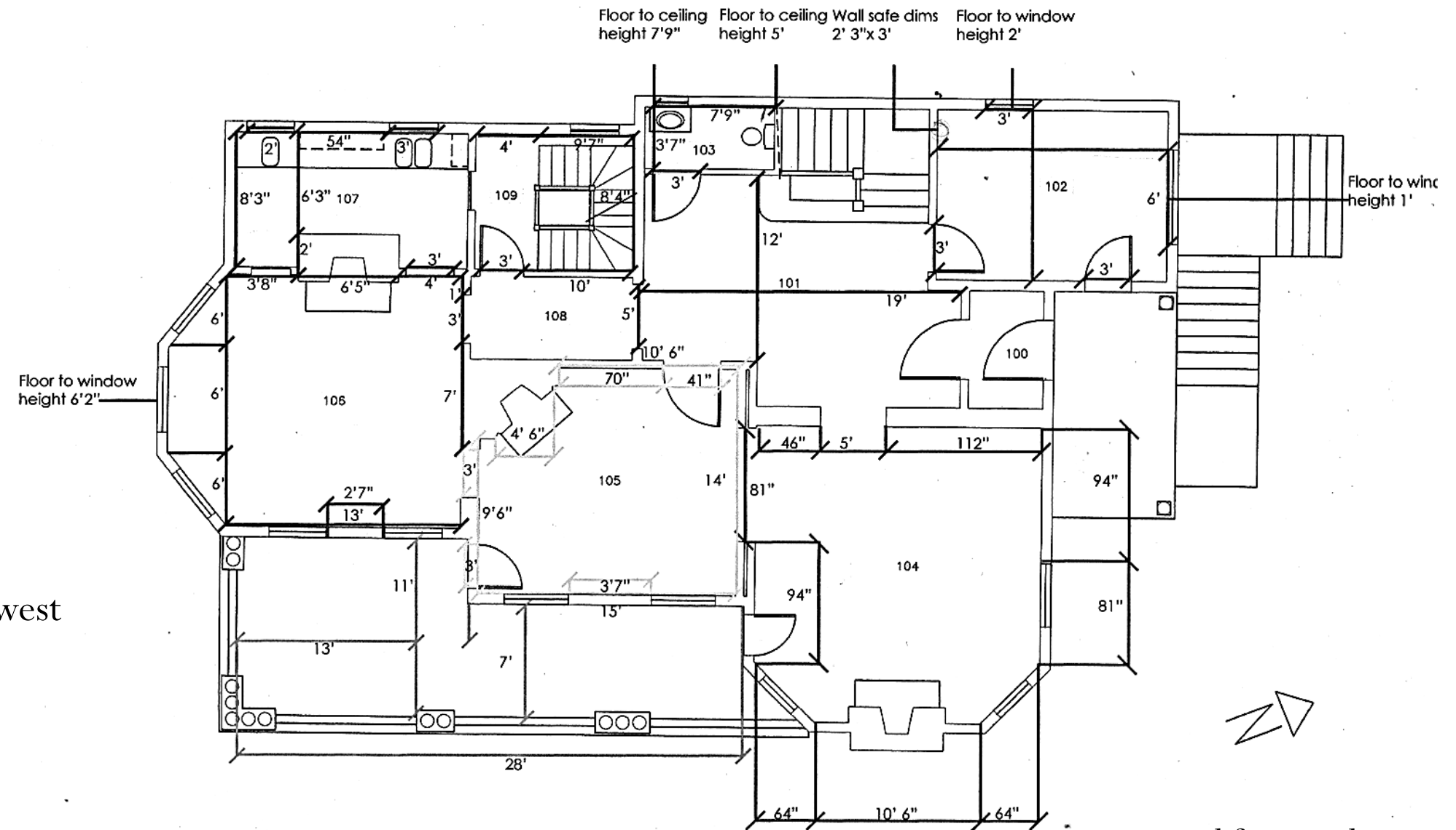
Site Analysis

223 East Gwinnett St. Savannah, GA



Building Orientation

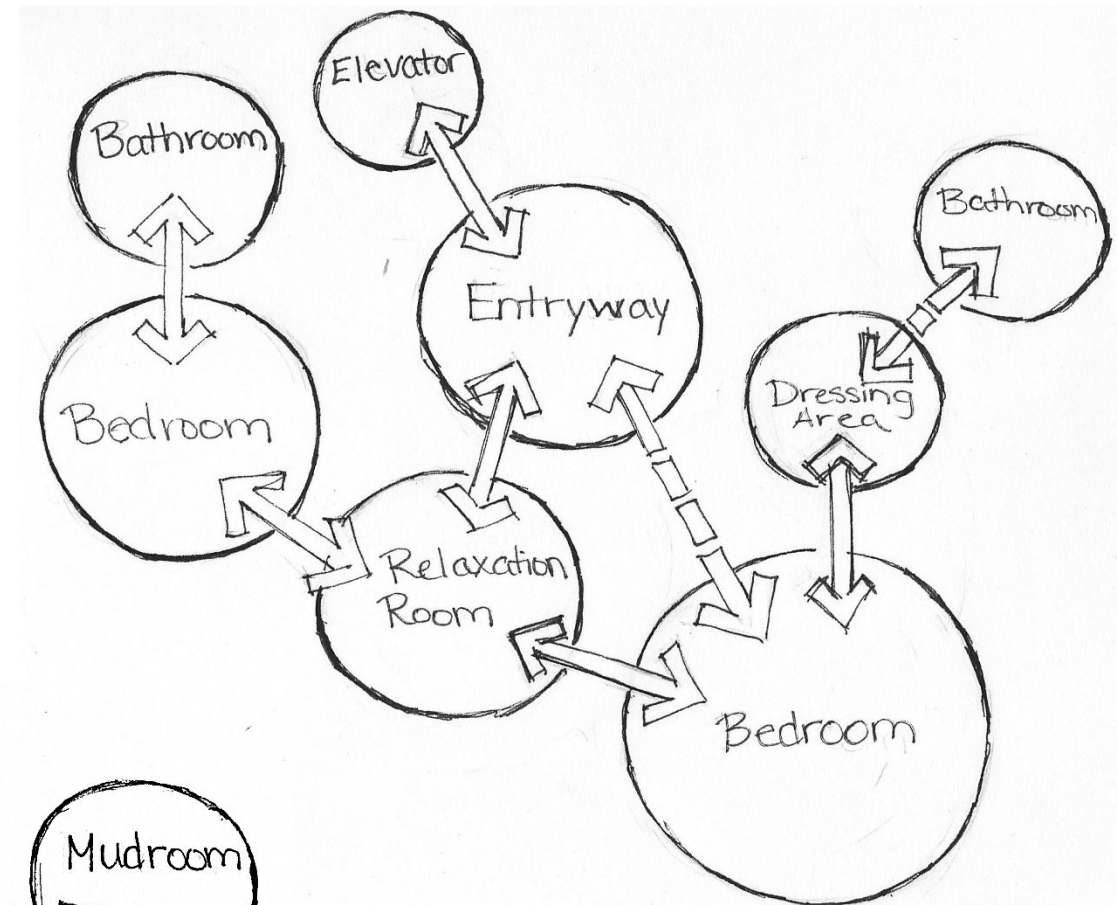
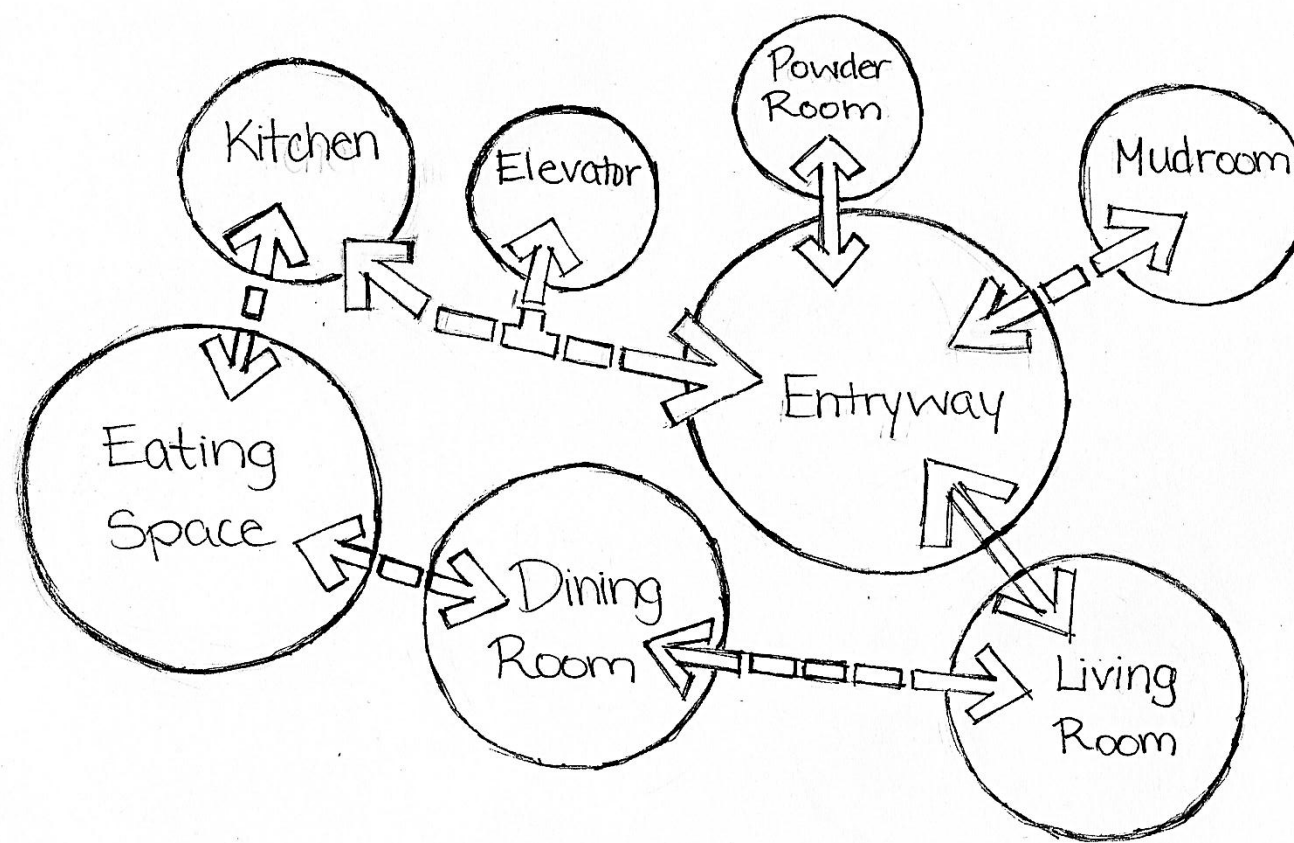
- Plenty of natural light from the west and south end of the house
- Issue with cooling the south side
- removing the service stairs and replacing them with an elevator



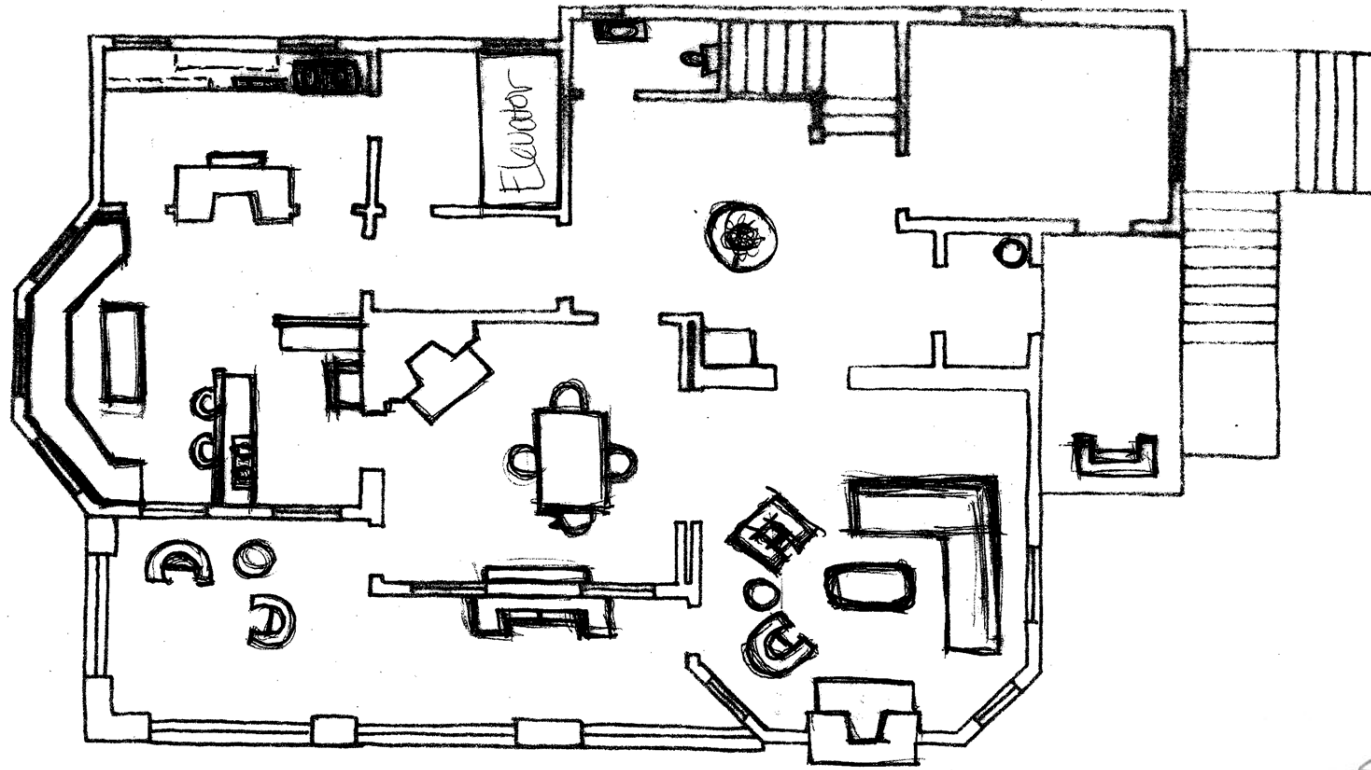
Received from Mila

Circulation

- The first floor is open public space
- The second floor is more intimate and private
- Many entrances to one space

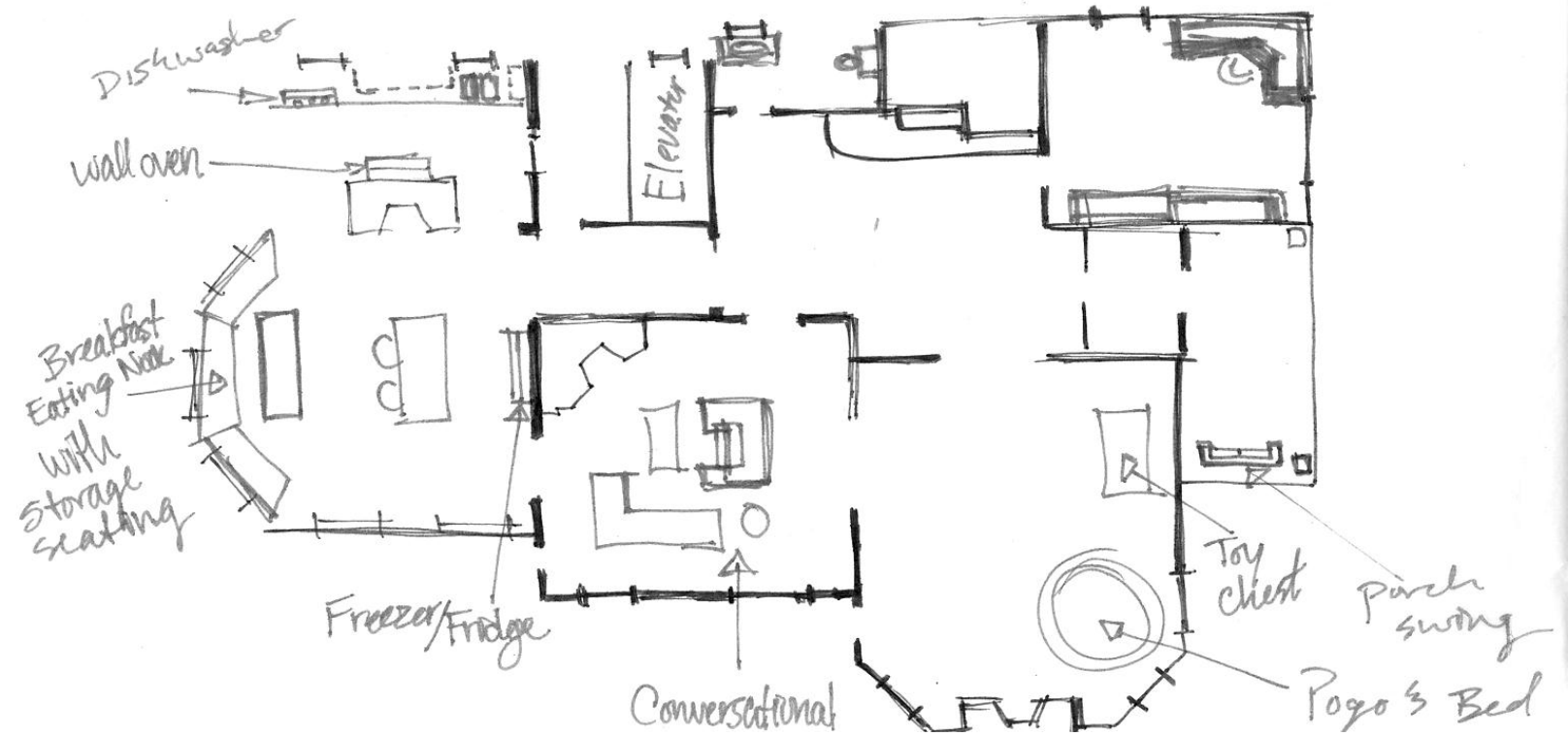


Furniture Plan 1st floor



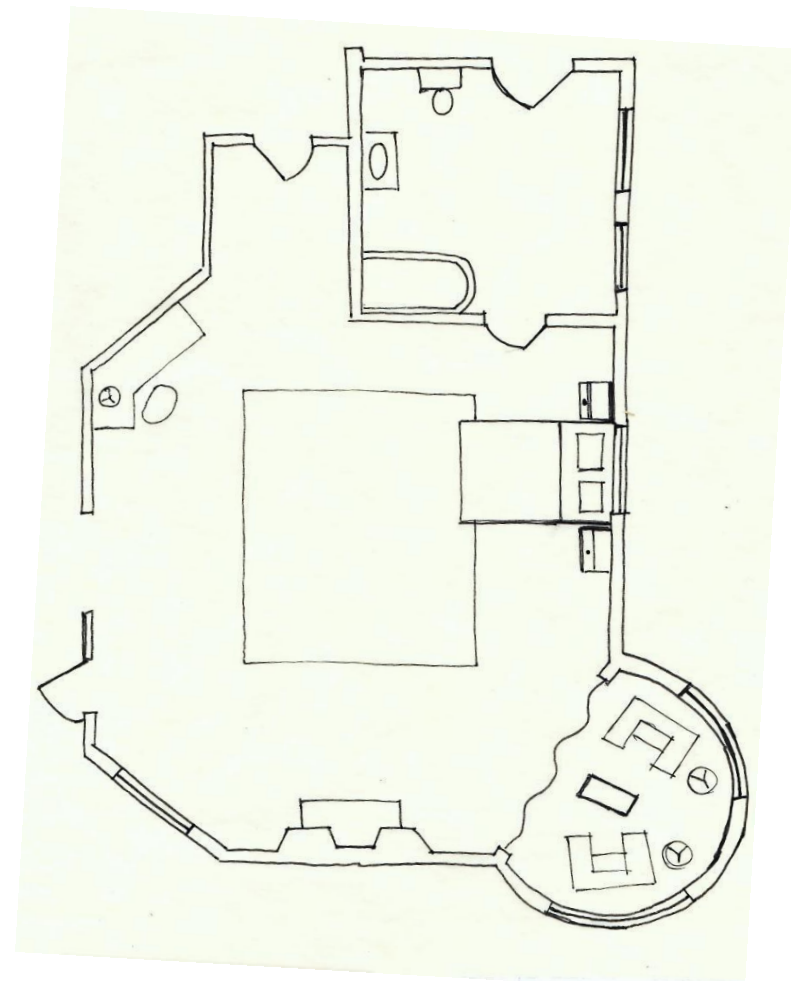
- Issue with the placement of the island bar and cooking area
- Booth seating in the eating space
- Issue with furniture arrangement in the living room

- Issue with the placement of the island bar
- Assigned the small front room as Victor's study area
- Issue with kitchen arrangement
- Left out a dining room
- Created a conversational area

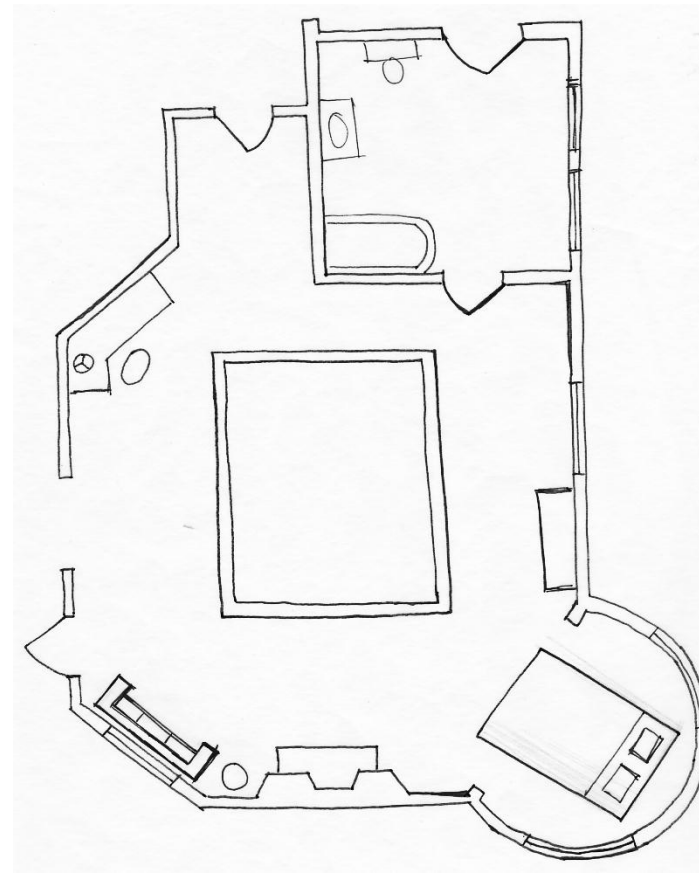


Furniture Plan 2nd Floor

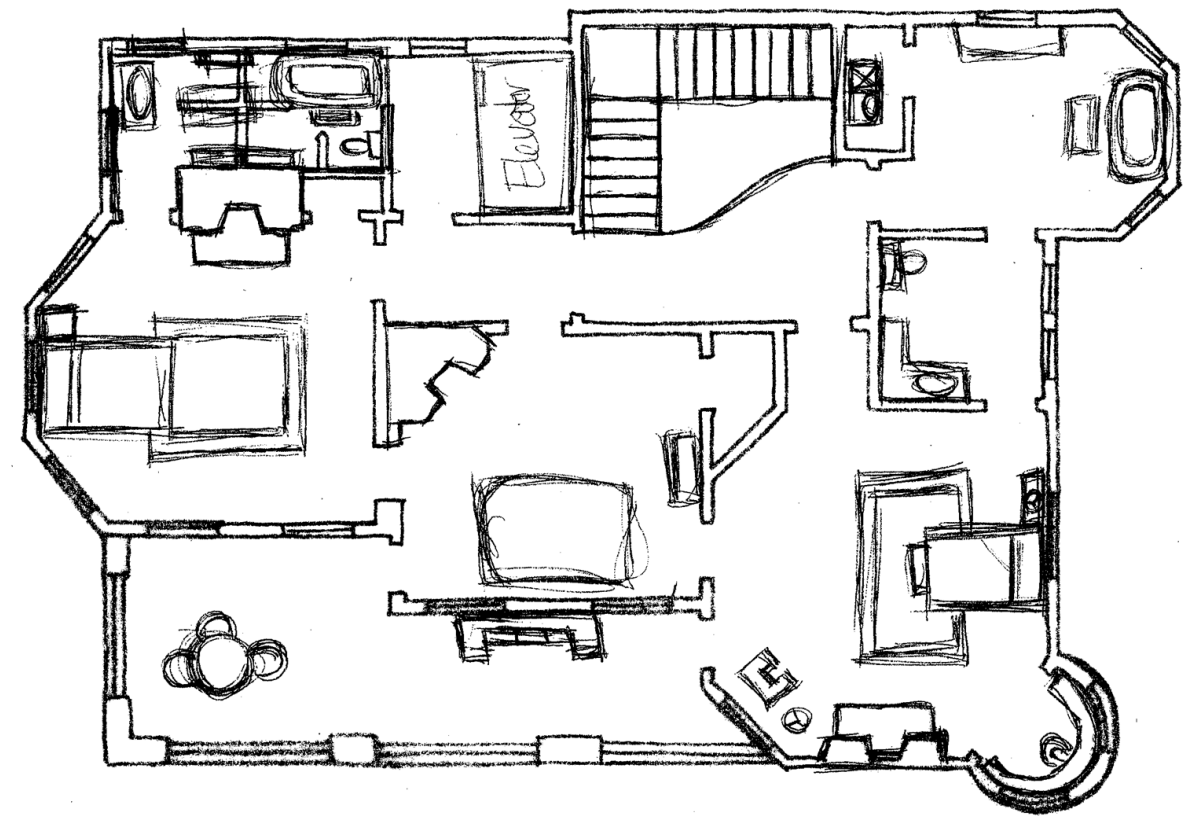
- transform the turret into a conversation area closed off by curtains for further privacy.



- Transformed the turret space into a secret sleeping area.
- extra seating, I put a small couch near the fireplace with a table.



- Transformed the turret into Victor's study
- Placed washer and dryer in the closet of the small front bedroom
- Placed the tub in the former bedroom
- Placed a chair and table near the fireplace
- Gave Pogo the center space



Perspective



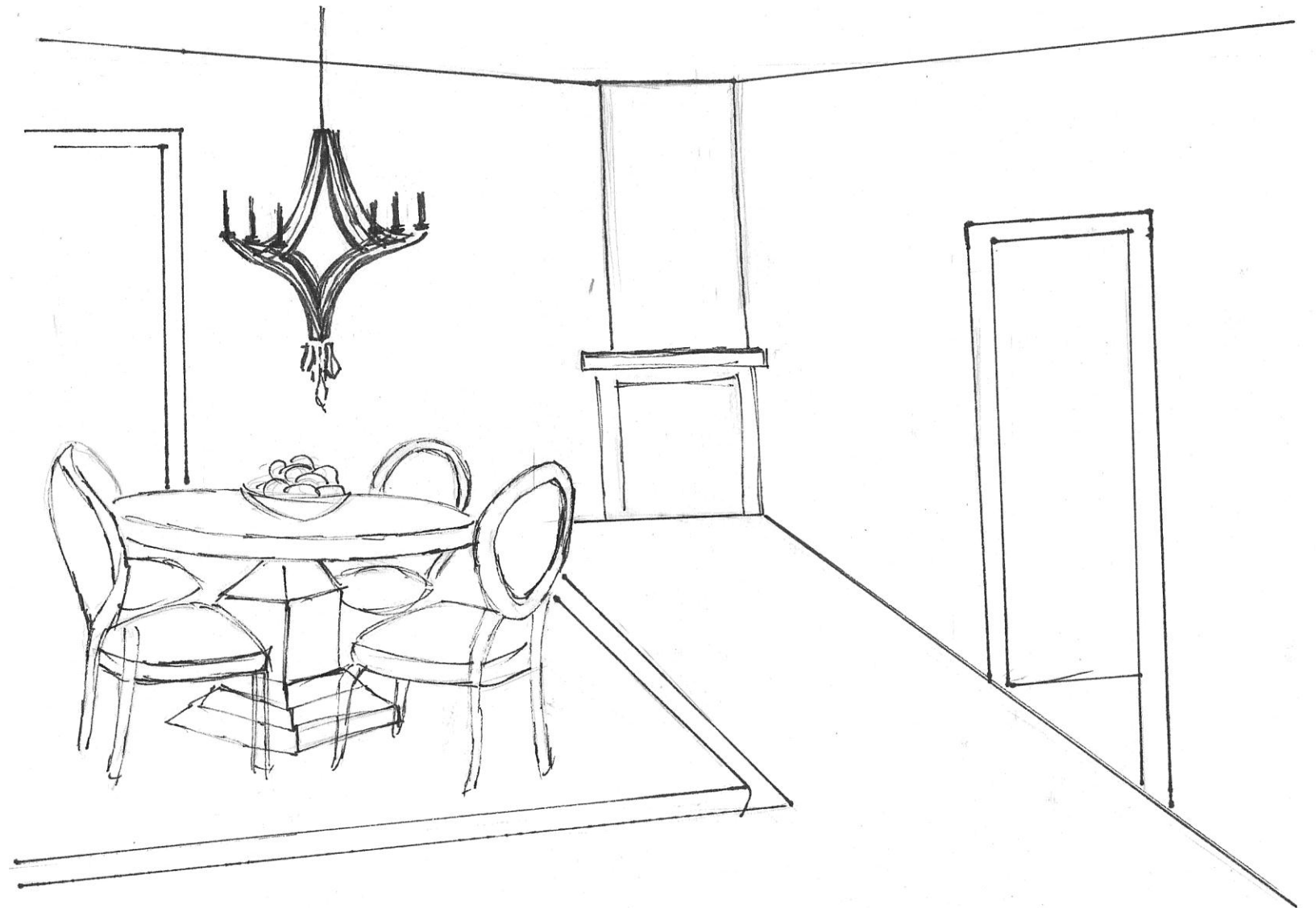
- Placed a large round entry table in the center with a vase full of flowers
- Interesting feature of the entryway is the built-in wooden bench

Perspective

- Furniture placed in the center of the space
- Intimate conversational area
- Large triple hung windows
- Issue with flow of the space



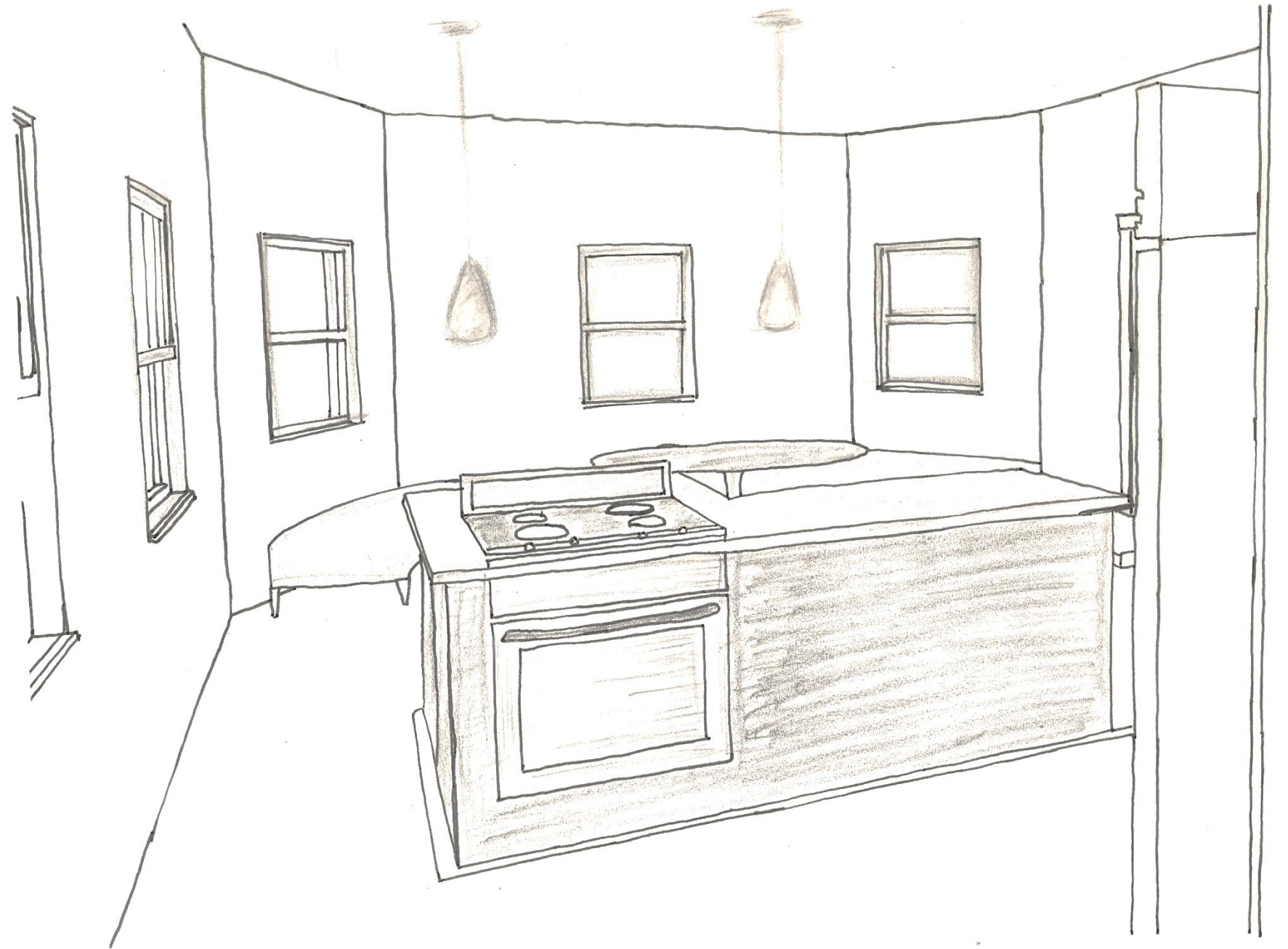
Perspective



- A small round table was the only kind that could fit in this space without obstructing the flow of movement
- not enough wall space since there are windows and two entry doorways

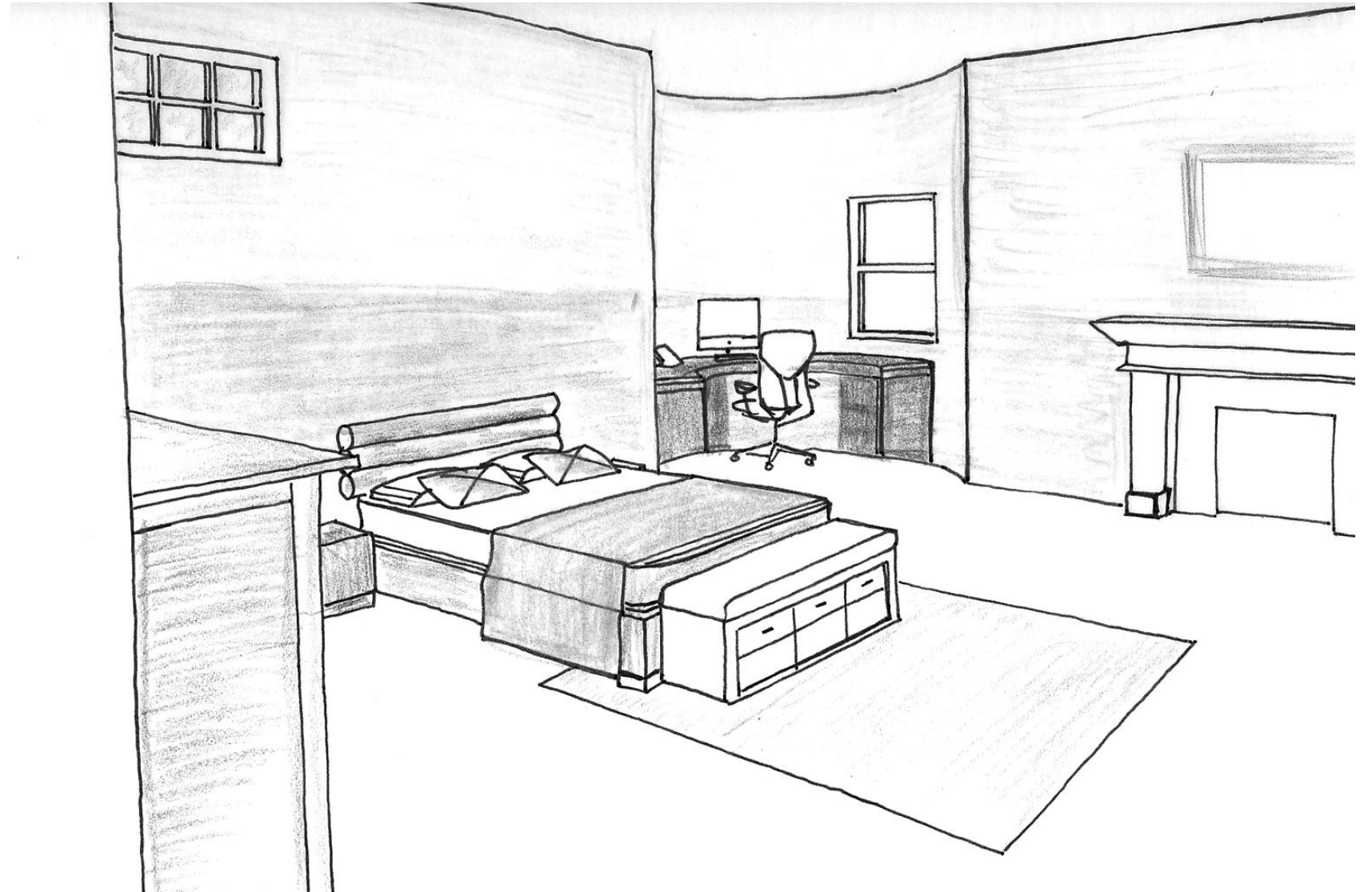
Perspective

- Not a good place for the fridge or oven
- The fridge and oven were far away from the preparation area of the kitchen



Perspective

- Originally was painting the walls in two shades of green
- Issue with transom window
- Turret transformed into Victor's study area
- Bench or trunk at the foot of platform bed
- Leather headboard
- Trim along the top of the walls
- Double hung window and triple hung window
- Dresser facing the bed



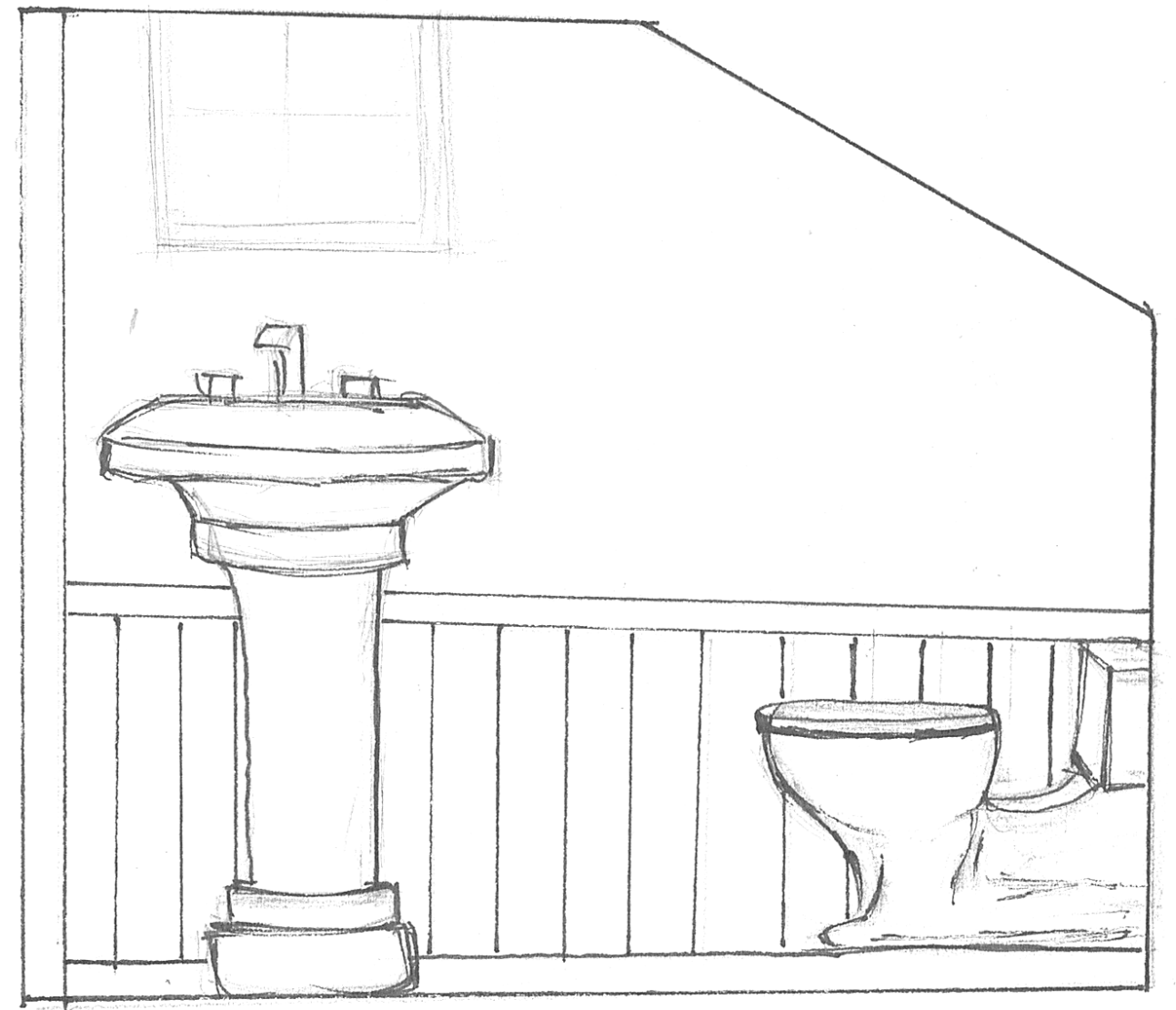
Perspective

- upstairs bathroom, I decided to expand into the small sleeping area
- The bathtub was originally natural stone
- Small wall sconces
- Roman shades for privacy
- Sink placed near the doorway to the original bathroom
- Toilet along the long wall
- Issue with filling the empty space



Powder Room Elevation

- The ceiling slopes over the toilet
- Not made for tall people
- White porcelain pedestal sink
- Adequate lighting



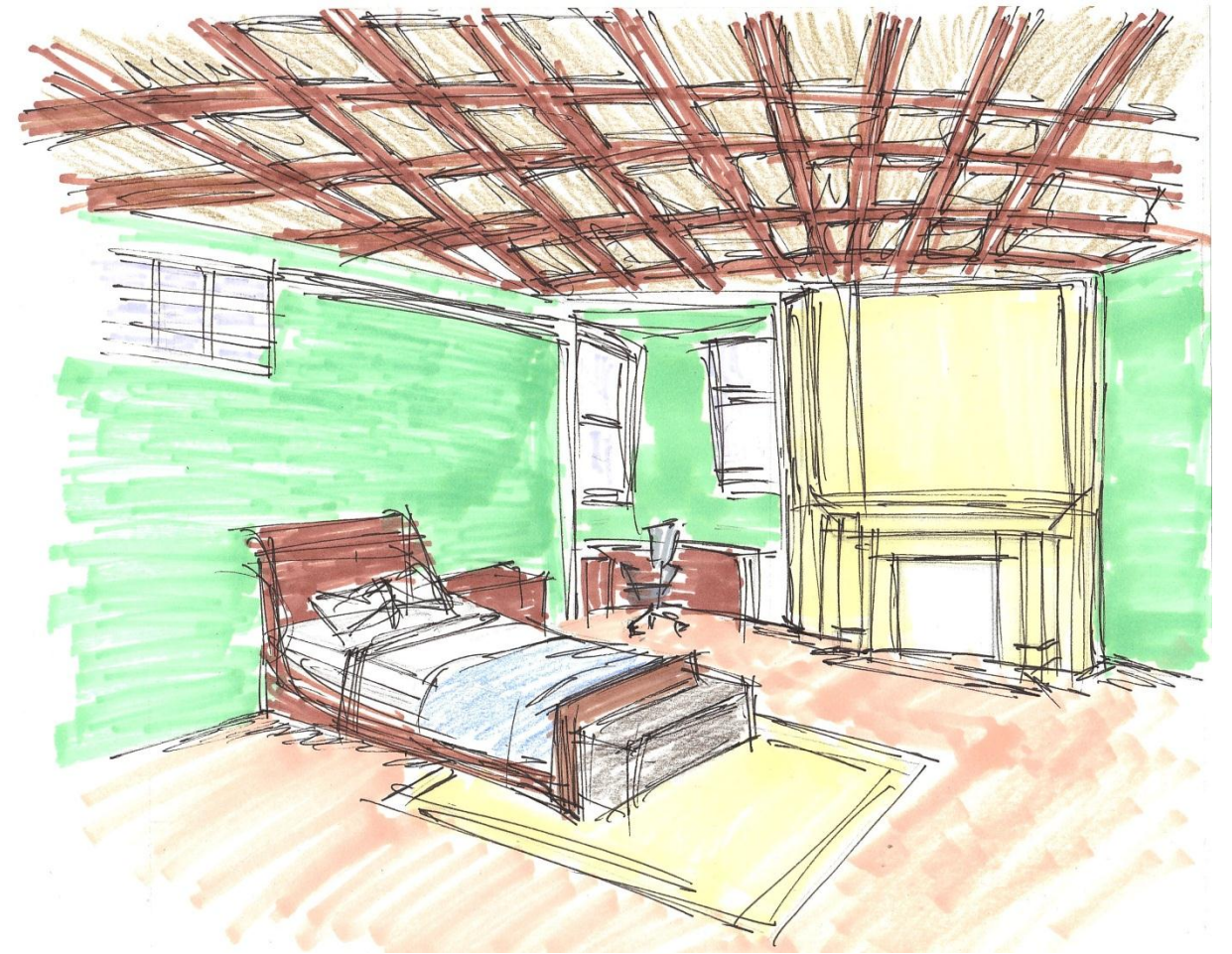
Kitchen Elevation

- 2 double door upper cabinets and base cabinets in between the long windows
- 1 double sink and 1 single sink
- Issue: not enough cooking space

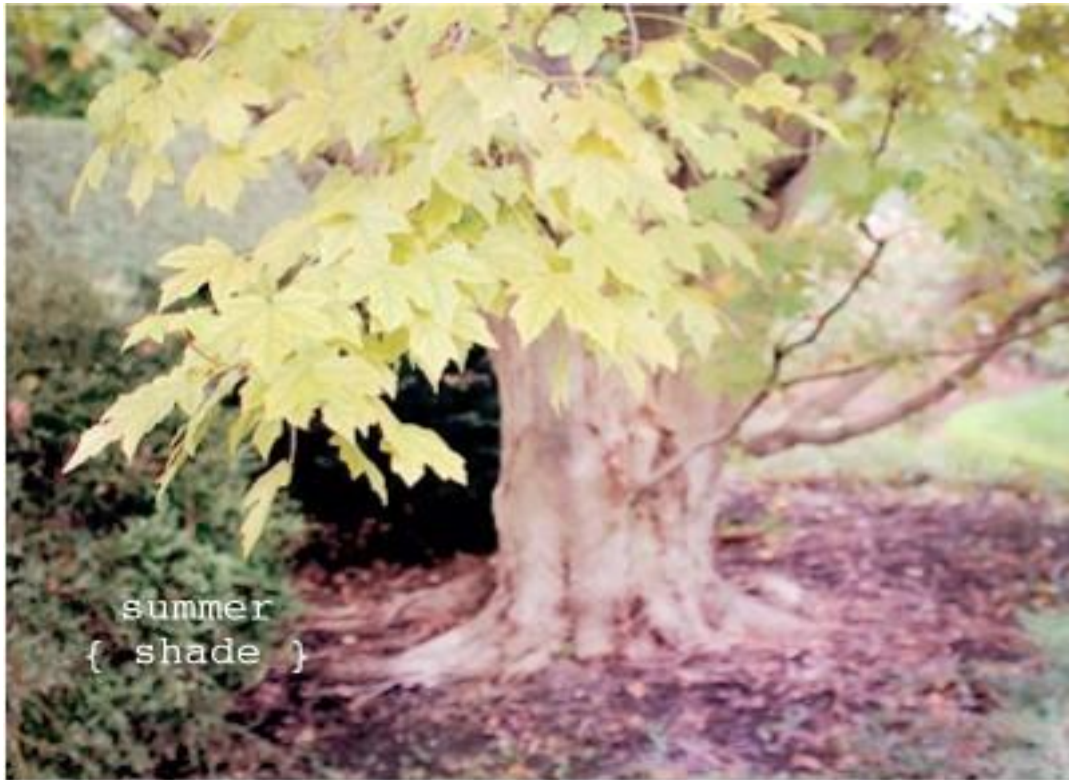


Final Appendix





Finishes



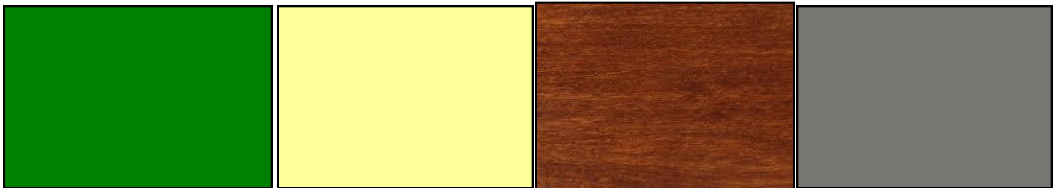
Kitchen & Eating Space



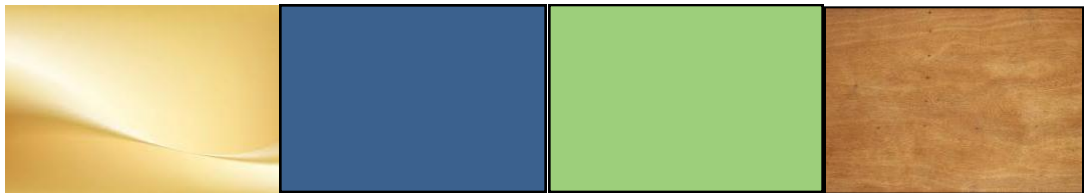
Victor’s Bedroom



Victor’s Bathroom



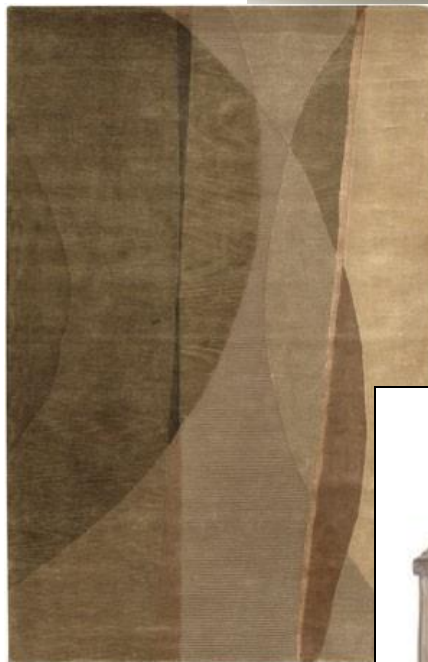
Living Room



Dining Room











KITCHEN & EATING SPACE

Summit 9.8 Cu. Ft. Energy Star Fridge w/ Bottom Freezer - Stainless Steel
\$1,249.99

Dimensions: 73” H x 23 3/4” W x 23 1/2” D

Summit Professional 20" Electric Range - Stainless Steel
\$899.99

Dimensions: 44"h x 20"w x 24"d

Fisher & Paykel 30” Over the Range Microwave - Stainless Steel
\$789.00

Dimensions: 29.9" W x 16.34" H x 15.28" D

Avanti 18" Built-In Energy Star Dishwasher - Stainless Steel
\$419.00

Dimensions: 32.25" H x 17.75" W x 21.75" D

IKEA AKURUM Fan cab/top cabinet to refrigerator, white, Ädel medium brown
\$102.00

Dimensions: 29 7/8 " W x 15 1/4 " H

IKEA AKURUM Wall cabinet with glass door, birch, Ädel medium brown
\$115.00

Dimensions: 14 7/8 " W x 30 3/8” H x 13 1/8” D

Winsome Wood 3pcs Modern Design Round Bar Table & 2 Stools Set
\$ 287.96

Bar table Dimensions: 28.74"L x 28.74"W x 40.16"H

Bar stool Dimensions: 15.94"L x 19.09"W x 37.4"H

Akurum Base Cabinet with 3 drawers
\$183.97

Dimensions: 14 7/8 " W x 24 1/8 " D x 30 3/8 " H

Merola Tile Tessera Piano Nassau 11-3/4 in. x 11-3/4 in. Stone & Glass Mosaic Wall Tile

\$ 13.75

Dimensions: 11.75 in. length x 11.75 wide x .5 in. thick

LIVING ROOM

Bensen Canyon Sectional Sofa
\$6,838.00

Dimensions: 23.5" H x 34.5" W x 69-86.25" D

3 Light Players Billiard Pool Table Light
\$398.00

Dimensions: 16” W x 4’ 8” L x 15” H

Chain/Cord 6’

Iszy Billiards 10 Cue Stick and Pool Ball Wall Rack Oak
\$109.95

Dimensions: 51 1/2" H x39" W X 4 " D

BDI USA Xela Square Coffee Table
\$ 1099.00
Dimensions: 12.75" H x 44" W x 44" D

Joss and Main Derek Arm Chair

\$701.80

"Moroccan Medallion" Rug at Horchow

\$1839.90

dimensions: 5’ W x 8’ L

DINING ROOM

Circa Lighting Oslo Chandelier
\$1,008.00
Dimensions: 33" H x 33" W
Canopy: 5 1/2" Round
Shade Size: 20" x 24" x 15"

Joss and Main Mastercraft Tuscan Occasional table
\$437.95
Dimensions 27" H x 25" Diameter

Eclipse Curtains Theodore Blackout Window Panel in Sage
\$34.99
Dimensions: 95” H x 52” W

Eco Hand Knotted Tibetan Rug
\$ 1449.00
Dimensions: 5’ x 8’ rectangle

MASTER BEDROOM

Joss and Main Mastercraft Manhattan Bureau
\$ 600.95
Dimensions: 48" H x 38.5" W x 19" D

Joss and Main Mastercraft Manhattan Nightstand
\$260.95
Dimensions: 30" H x 28" W x 19" D

Joss and Main Mastercraft Manhattan King size Bed
\$800.95
Dimensions: 51.5" H x 95" W x 81.5" D

Louis Vuitton steamer trunk-- leather and brass
\$1,830
Dimensions: 43-1/2” L x 21-1/4” H x 13” D

MASTER BATHROOM

Ava triple Bath sconce

\$588.00

9 1/4" H x 20” W
Extension: 6" Back plate: 4 1/2" Round

Whispering Creek Wall Decor Fountain

\$899.00

Dimensions: 22 in wide x 5 in deep x 46 in tall

Eco Soirée® One Piece Toilet, Universal Height, 1.28 GPF
\$1,561.00
Universal Height

Soiree® Free Standing Bathtub
\$5995.00
Dimensions: 72-3/8" x 39-1/2" x 25-3/8"

Royo Bath by Nameeks Spazio Complete 24" Bathroom Vanity Set
\$2059.99
Dimensions: 23" H x 24" W x 15" D

Sedona Hamper with Liner Set
\$99.95
Dimensions: 17" diameter x 24" H

Cultured Stone Co.
Del Mare LedgeStone Black Isle
Stone sizes: 1½"-9" H x 4½"-16½" L
Thickness: ¾"-2½"

Bette Brushed Nickel Patterned Fixture Pendant
\$975

Dimensions: 22 x 22 x 18H

RELAXATION ROOM

Bowsers Medium Puma Double Donut Dog Bed

\$ 133.93

Dimensions: 35" × 27" × 15"

Electrohome EANOS501 3-in-1 Vintage Classic Turntable Real Wood
Stereo System with AM/FM Radio, CD & Full Size Record Player &
Electrohome Nostalgia 500 Series Stand
\$144.99
Dimensions: 12" x 20" x 9"

Deluxe Eight Motor Massage Recliner and Ottoman with Heat in
Dark Brown Faux Leather
\$277.44
Dimensions: 32.5-36.5" H x 29" W x 32-45.2" D

Hip rugs Festival FCY2145 Rug
\$289.00
Dimensions: 4' x 6' rectangle

DRESSING ROOM

Walnut & Platinum Elfa décor Modern Reach-In Closet
\$1489.61
Dimensions: 96" H x 75" W

Randolph Small Round Flush Mount
\$630.00
Dimensions: 4 1/2" H x 11 1/4"

Pinecroft Sliding Frosted Glass Fusion Frosted Choco Frame
\$465.38
Dimensions: 60 in. x 80-1/2 in.